



Precast Combination Lift Station with Integral Valve Vault



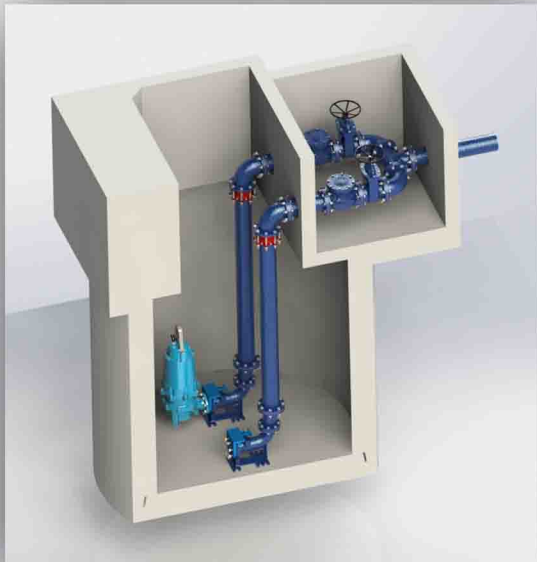
- **Pre-Engineered & Customized per project requirements**
- **Factory Assembled & Tested**
- **Saves Time & Cost with less labor**

- **Simplify installation** by utilizing Factory Assembly & Pre-Engineered accessories
- **Minimize risk** by reducing installation time on new lift station (minimize bypass pumping)
- **Improve quality** with sole source responsibility for complete lift station
- **Reduced footprint** allows for lift station replacement without additional property acquisition

Why should YOU choose the ENDESOL Combination Lift Station design?

Simplify and Save

- *Integral valve vault eliminates differential settlement*
- *Heavy Duty reinforced precast concrete construction*
- *Less expensive than traditional lift station layouts*
- *Pre-engineered top slab accomodates control panel/junction box mounting*
- *Pre-installed conduits for required pump/control cords*

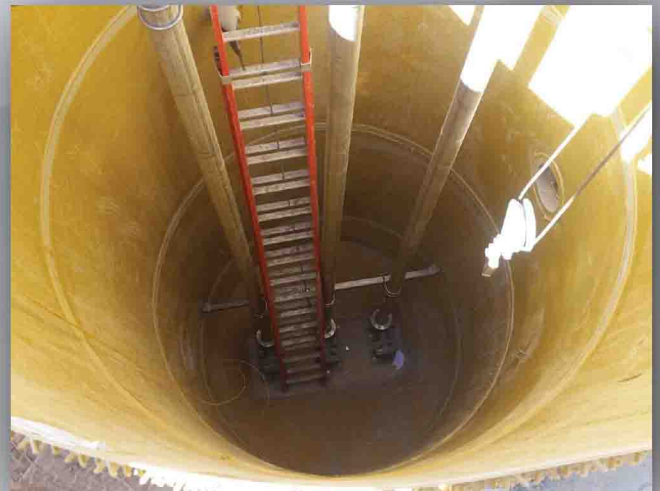


Your Choice of Pump

- *Factory installed pump bases*
- *Choose any brand of pump*
 - *Keen, Myers, Flygt, Homa, ABS, Barnes, Cornell, KSB, Ebara, Grundfos, Vaughan, Mody, and more*
- *Grinder, Non-clog, Chopper, Vacuum Primed*
- *Submersible, Dry Pit, Suction Lift*
- *Simplex, Duplex, or Triplex*

Protect Your Lift Station

- *Factory applied protective additives, coatings, and linings*
- *PREDL protective lining system*
- *Xypex, ConShield*
- *Spray-on Epoxy systems*
- *401 Protecto and Tnemec Epoxy coatings for Ductile Iron Pipe and fittings*



Optional Accessories



- *Aluminum access hatches & safety grating*
- *Ladders, safety posts, and hoists*
- *Trash Baskets*
- *Vents*
- *Transducers and floats*
- *Pressure gauges*
- *Magnetic flow meters*
- *Combo air release valves*
- *Tideflex check valves*
- *Emergency pump connections*
- *Drop connections*
- *Custom control panels & Junction boxes*
- *Chemical feed systems*

Factory Piping Options

- *Ductile iron, HDPE, PVC, or Stainless steel piping and fittings*
- *Flanged ductile iron check valves, gate valves, and plug valves*
- *Assembled & Tested in our factory*



Need Assistance with Your Design?

- *ENDESOL has in house Professional Engineering capabilities and can aid with engineering your combined lift station from start to finish.*
- *We have the experience to help you choose the correct pump and lift station for your application.*
- *We can provide CAD drawings and specifications for use in bid documents.*
- *We can oversee installation of our Combined Lift Station to ensure proper assembly.*



P: (270) 363-2234 | F: (270) 298-7424

www.engineered-ds.com

Mailing:
P.O. Box 27
Hartford, KY
42347

Physical:
981 W. 7th St.
Beaver Dam, KY
42320